



Sewing Tutorial for rescue wildlife pouches

Fabric requirements:

SIZE	Finished Size		Fabric Requirements		Species
	Outer	Liner	Outer	Liner	
XX Small	10 x 15cm 4" x 6"	10 x 20cm 4" x 8"	35 x 23cm 14" x 9"	35 x 30cm 14" x 11"	Sugar Glider, unfurred possum
X Small	15 x 20cm 6" x 8"	15 x 25cm 6" x 10"	4cm x 28cm 18" x 11"	46 x 35cm 18" x 13"	Ringtail Possum, Bandicoot
Small	20 x 30cm 8" x 12"	20x 35cm 8" x 14"	51 x 38cm 20" x 15"	51 x 44cm 20" x 17"	Bushtail possum, Koala
Medium	25 x 35cm 10" x 14"	25 x 40cm 10" x 16"	61cm x 24" x 17"	44cm 24" x 19"	Just furring Joey
Medium Large	30 x 35cm 12" x 14"	30 x 40cm 12" x 16"	72 x 44cm 28" x 17"	72 x 49cm 28" x 19"	Very young roos & wallabies, bushtail possum
X Large	45 x 55cm 18" x 22"	45 x 60cm 18" x 24"	102 x 64cm 40" x 25"	102 x 69cm 40" x 27"	Just furring roos, wallaby
XX Large	60 x 70cm 24" x 28"	60 x 75cm 24" x 30"	132 x 80cm 52" x 31"	132 x 85cm 52" x 33"	Eastern Grey spoiled joey

Please note: conversions between inches and cm are not exact but a rough guide only

Fabric Notes:

Liners should be 100% natural fibres – no polyester, synthetics or fabrics that have plastic or glitter. Breathability and softness are the priority. Flannelette, light cotton or jersey is recommended. NO WOOL PLEASE.

Outer pouches can be anything from light fabrics for summer to warmer fleeces and wool for winter. Fabric pouches rather than crochet/knit pouches are preferred.

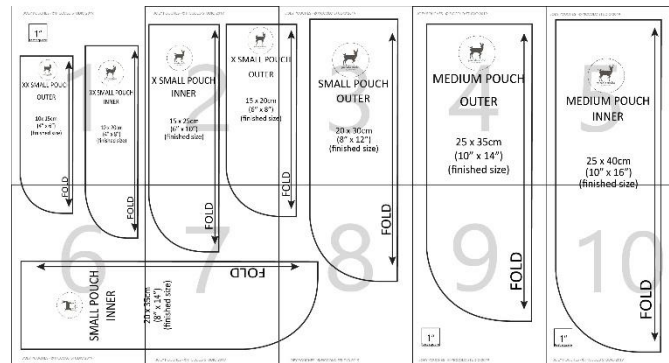




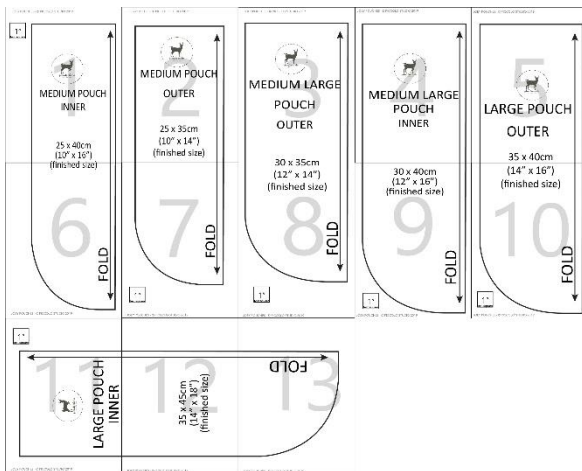
Instructions:

Select and Print Templates:

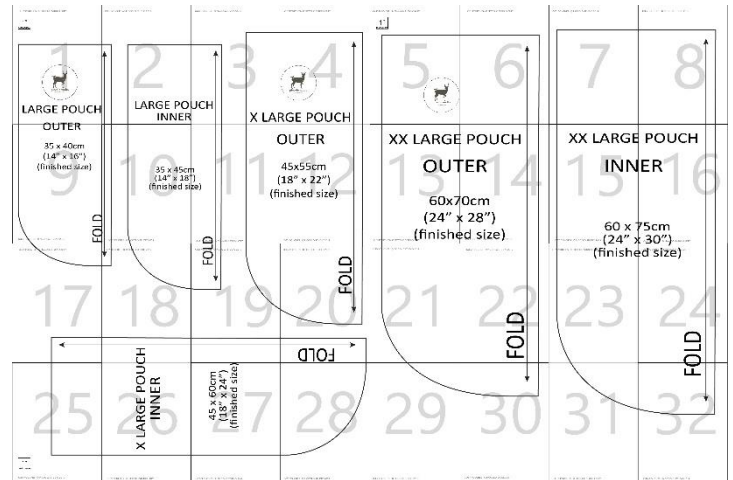
For ease of printing there are 3 separate PDFs attached to this pattern to account for different size pouches. Select your required size according to the template images below.



XX SMALL TO MEDIUM



MEDIUM TO LARGE



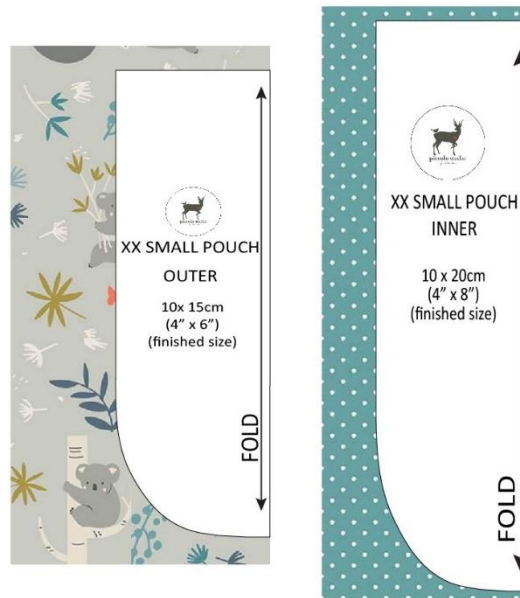
LARGE TO XX LARGE

- ❖ Open the selected PDF template and print, setting the print scale at 100% and making sure the box “Scale to Fit” isn’t checked. The 1” test square on Page 1 will help to ensure the printing has been done correctly.
- ❖ Cutting the top and left side of each pattern page layout as per image above
- ❖ Tape the pattern together lining up edges and the stocking shape (don’t forget to put tape on the back too).
- ❖ Cut out pouch sizes required



Cutting the Pieces:

- ❖ Take your liner and outer fabric and fold in half lengthwise. Lay your template along the folded edge.



- ❖ Cut TWO of each shape out





Sewing your outer:

- ❖ Place your outer pieces RST (right sides together) and pin. Using approximately a 1cm (1/2") seam allowance, stitch around the outside of your shape. Use a shorter stitch length to ensure sturdiness of the seam and lock your stitches at the beginning and end of sewing. DO NOT STITCH ACROSS THE TOP OF YOUR POUCH. Trim your seams down.

Please note: When it comes to fabric for wildlife pouches your softest side is your right side. This may not be the printed side.



- ❖ Fold the top of your pouch down approximately 2 ½ cm (1"). Press. Stitch 2-3 lines across the top to secure and provide some sturdiness.

- ❖ Fold over again. Press and stitch a line to secure.



- ❖ Turn pouch right side out and iron so all seams are flat. Sew around the outside of your pouch again with enough of a seam allowance to completely enclose the raw edge on the inside. This is known as a French seam. Double check for pins and loose threads.

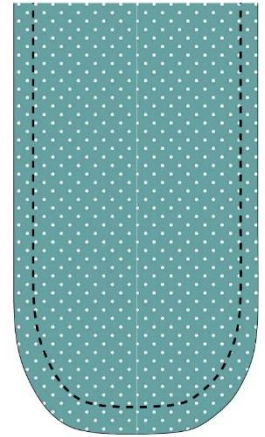


Sewing your liner:

Note: Make 2-3 liners for every outer so that washing and changing is easier for our amazing wildlife carers.

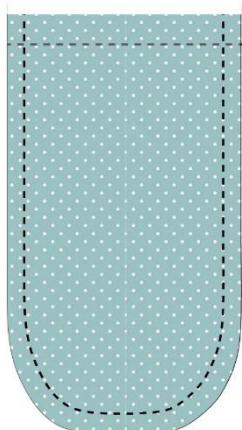
- ❖ Place your outer pieces WST (wrong sides together) and pin. Using approximately a 1cm (1/2") seam allowance, stitch around the outside of your shape. Use a shorter stitch length to ensure sturdiness of the seam and lock your stitches at the beginning and end of sewing. **DO NOT STITCH ACROSS THE TOP OF YOUR POUCH.** Trim your seams down.

Please note: When it comes to fabric for wildlife pouches your softest side is your right side. This may not be the printed side.



- ❖ Fold the top of your pouch down approximately 2 ½ cm (1"). Press. Stitch 2-3 lines across the top to secure and provide some sturdiness.

- ❖ Fold over again. Press and stitch a line to secure



- ❖ Turn pouch **WRONG** side out and iron so all seams are flat. Sew around the outside of your pouch again with enough of a seam allowance to completely enclose the raw edge on the inside. This is known as a French seam. Double check for pins and loose threads.

- ❖ Place your liner inside your pouch and fold over. Congratulate yourself on a job well done!